



**Equity
Builder
Program™**

Yes, you can own a new home!

LAKE'S EDGE VILLAS



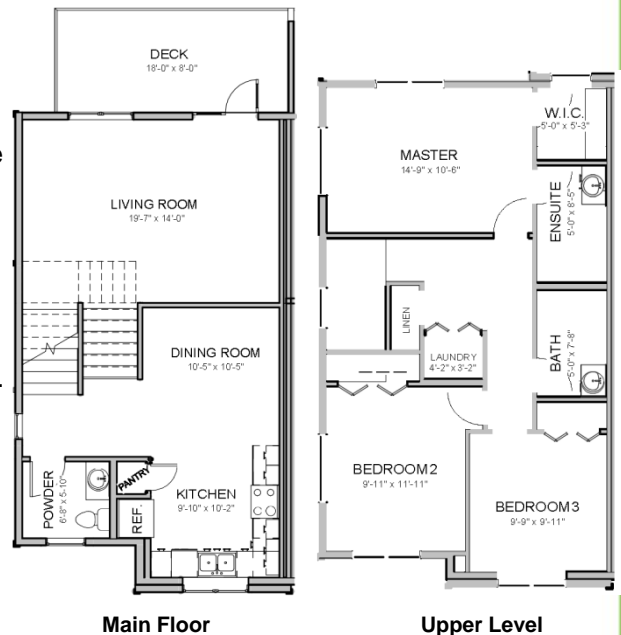
LOCATION	1070 Parr Hill Drive Martensville, SK
DEVELOPER	Baydo Development Corporation
SALES OFFICE	Larry Rollack Leo Liu (306) 974-1727 WMW Homes (306) 373-7520
OCCUPANCY	Fall 2016
SALE PRICE	\$269,900 - \$319,900 incl. GST

DESCRIPTION

- 3 bedroom and 2.5 bathroom units ranging between 1,483 sq. ft. - 1,656 sq. ft. plus an unfinished basement with the option for development.
- Each unit includes 12 foot ceilings on the main floor, custom cabinetry, quartz countertops, built-in microwave and dishwasher with optional appliance package.
- Walk in closet in master ensuite and second floor laundry are standard.
- Single attached garage, private deck and full landscaping included. Most units include a driveway for additional parking.
- Each unit is covered with new home warranty protection.

DOWN PAYMENT ASSISTANCE AVAILABLE:*

- HeadStart Equity Builder Program™: Loans up to 5% of purchase price, repayable over 5 years at Prime, from Credit Union partners.
- \$1,000 down payment grants are available from the City of Martensville.



*Individual restrictions may apply.