



**Equity
Builder
Program™**

Yes, you can own a new home!

SANDSTONE TERRACE CONDOMINIUMS II



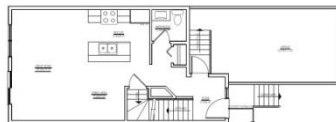
| | |
|----------------------|--|
| LOCATION | 119-145 Plains Circle Pilot Butte, SK |
| DEVELOPER | 101228434 Saskatchewan Ltd. |
| LISTING AGENT | RE/MAX Crown Real Estate Terrie Dunand (306) 530-9050 terriedunand@me.com |
| OCCUPANCY | Available Now! |
| SALE PRICE | \$279,900 - \$316,900 incl. GST |

DESCRIPTION

- Two-storey townhouse-style single family dwellings (1,246 sq. ft.).
- Units range from 2-bedroom 2.5-bathroom to 3-bedroom 1.5 bathroom.
- Each unit will feature maple cabinets and laminate counter tops.
- Units will also include 6 appliances, an attached single car garage and unfinished basement with roughed-in plumbing for future development.
- Each home is covered with new home warranty protection.

DOWN PAYMENT ASSISTANCE AVAILABLE:*

- HeadStart Equity Builder Program™: Loans up to 5% of purchase price, repayable over 5 years at Prime, from Credit Union partners.
- Property tax reduction over 2 years.



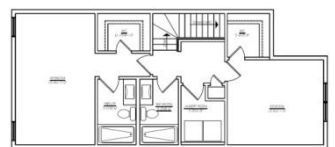
**Unit A: 2 storey main
(3-bed, 1.5-bath)**



**Unit B: 2 storey main
(2-bed, 2.5-bath)**



**Unit A: 2 storey second
(3-bed, 1.5-bath)**



**Unit B: 2 storey second
(2-bed, 2.5-bath)**

*Individual restrictions may apply.