



Equity
Builder
Program™

Yes, you can own a new home!

SANDSTONE TERRACE CONDOMINIUMS III



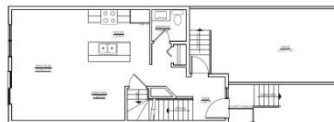
LOCATION	119-145 Plains Circle Pilot Butte, SK
DEVELOPER	101228434 Saskatchewan Ltd.
LISTING AGENT	RE/MAX Crown Real Estate Terrie Dunand (306) 530-9050 terriedunand@me.com
OCCUPANCY	Fall 2016
SALE PRICE	\$279,900 - \$316,900 incl. GST

DESCRIPTION

- Two-storey townhouse-style single family dwellings at 977 sq. ft. and at 1,246 sq. ft.
- Units range from 2-bedroom 2.5-bathroom to 3-bedroom 1.5 bathroom.
- Each unit will feature maple cabinets and laminate counter tops.
- Units will also include 6 appliances, an attached single car garage and unfinished basement with roughed-in plumbing for future development.
- Each home is covered with new home warranty protection.

DOWN PAYMENT ASSISTANCE AVAILABLE:*

- HeadStart Equity Builder Program™: Loans up to 5% of purchase price, repayable over 5 years at Prime, from Credit Union partners.
- Property tax reduction over 2 years.



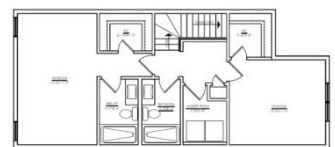
Unit A: 2 storey main
(3-bed, 1.5-bath)



Unit B: 2 storey main
(2-bed, 2.5-bath)



Unit A: 2 storey second
(3-bed, 1.5-bath)



Unit B: 2 storey second
(2-bed, 2.5-bath)

*Individual restrictions may apply.